



The mindful approach to PSHE

Year 3

Changing Me

Key Vocab

Male

Female

Testicles

Sperm

Penis

Ovaries

Egg

Uterus

Womb

Vagina

Puberty

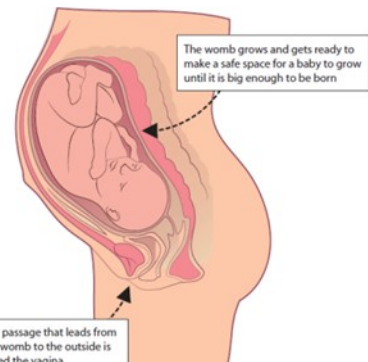
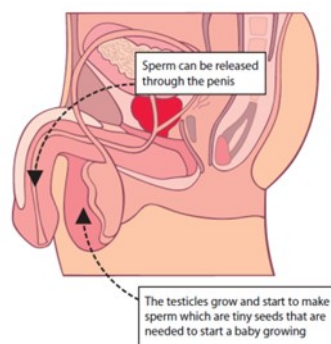
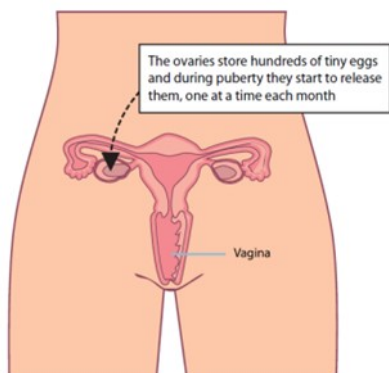
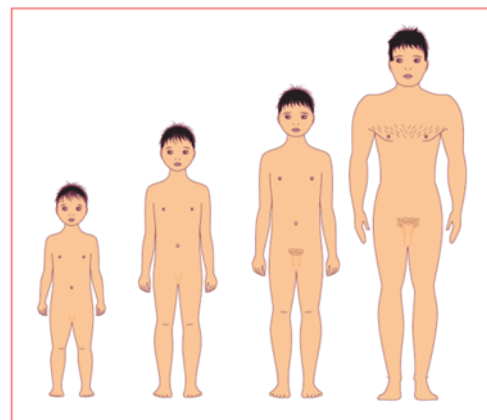
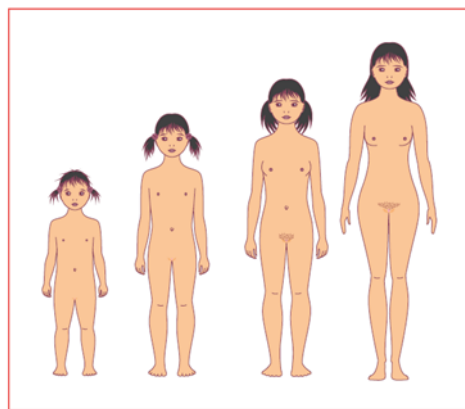
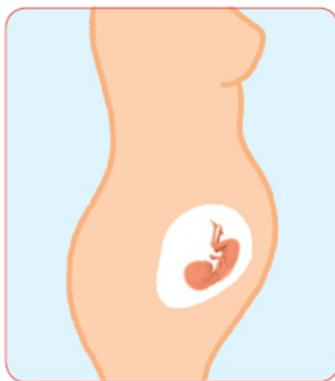
Lesson 1 (25/6/18) - Understanding animals and humans go through lots of changes and that the female usually has the baby.

Lesson 2 (25/6/18) - Understand how babies grow and develop in the mothers' uterus and what a baby needs to live and grow.

Lesson 3 (27/6/18) - Understand that boys' and girls' bodies need to change as they get older so that they can make babies. Identify changes outside the body.

Lesson 4 (28/6/18) - Understand how girls' and boys' bodies change on the inside and why this is necessary so that their bodies can make babies when they grow up.

Lesson 5 (29/6/18) - To discuss stereotypes within family roles



When one of these eggs joins with a sperm it will start to grow into a baby

